



## SHoP architects completes conjoined American copper buildings in New York

Along Manhattan's East River waterfront, SHoP Architects has completed an angled pair of copper-clad towers linked by a three-story skybridge. Known as the 'American Copper Buildings', the two structures — standing at 41 and 48 stories — contain a total of 761 luxury rental residences. Located at 626 First Avenue, the development has now opened its leasing office and is currently welcoming its first residents.



The American Copper Buildings are the result of a longstanding collaboration between SHoP Architects and the JDS development group. Clad in 4.25 million pounds of raw copper, residences inside the 'dancing' towers range from studios to three-bedroom apartments. Both structures feature a grand lobby with 25-foot ceilings that overlook a newly landscaped park. A porte cochère provides access to secure on-site parking with valet service, while the underground parking reception offers a direct connection to the lobbies above.

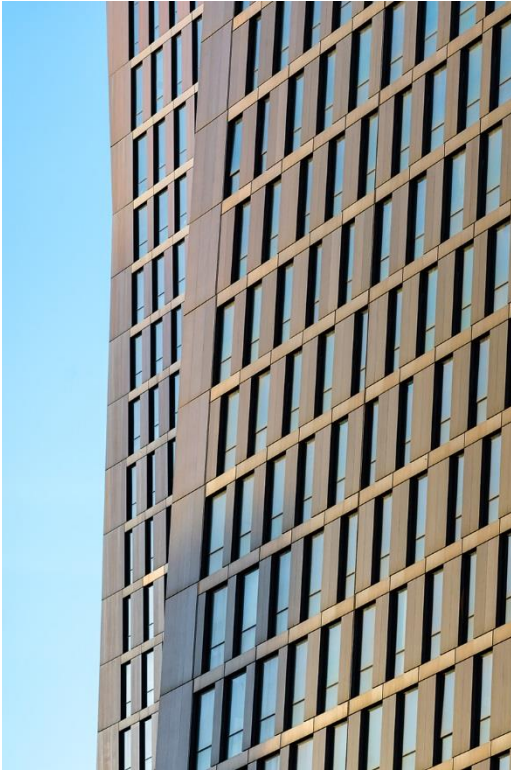


Individual units feature large floor-to-ceiling windows that offer sweeping views across the city. all residences include generous ceiling heights, oak flooring, and custom light fixtures. Kitchens are equipped with Miele appliances and come with marble countertops and backsplashes. Bathrooms have signature 'crocodile' marble accent shower walls, antique brass detailing, and full-length built-in medicine cabinets.



the structure is clad in 4.25 million pounds of raw copper

Residents have access to more than 60,000 square feet of on-site amenities. The 100 foot-long skybridge, which connects the two buildings 300 feet above ground, contains a 75 foot indoor lap pool, a hot tub on the 28th floor, and a fully furnished bar and lounge on the level above. A double-height fitness center is also included, complete with a rock-climbing wall with skyline views.



the two buildings contain a total of 761 luxury rental residences

A turkish-style marble hammam with plunge pool joins a yoga studio and a private spa with treatment rooms. If that isn't enough, a catering kitchen, a juice bar, and a children's playroom are also included. Meanwhile, the rooftop of the east tower boasts an infinity-edge swimming pool with outdoor shower, a landscaped sky bar, an open-air lounge, and dining and grilling areas.

